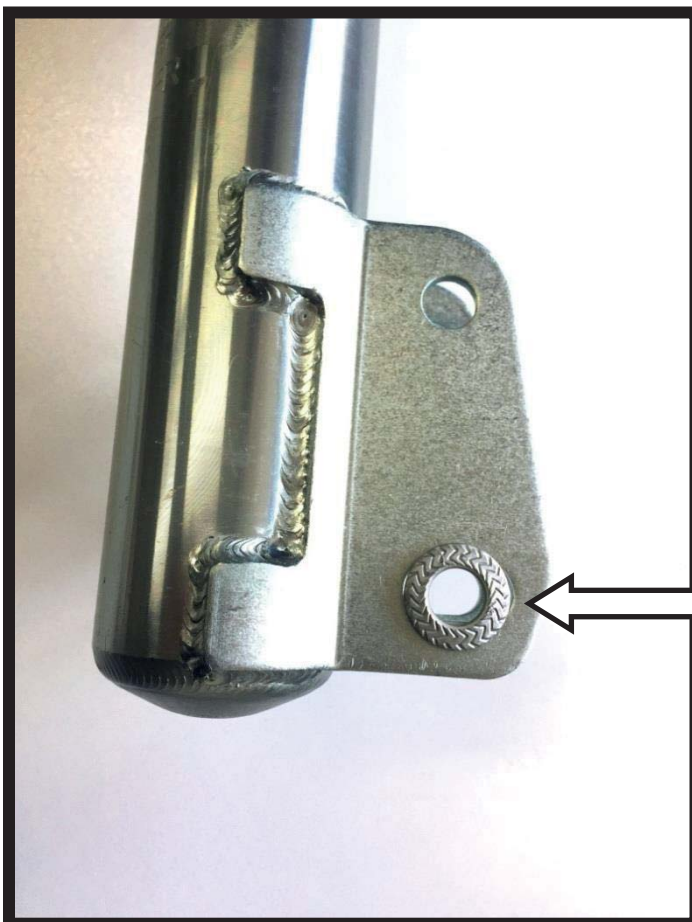
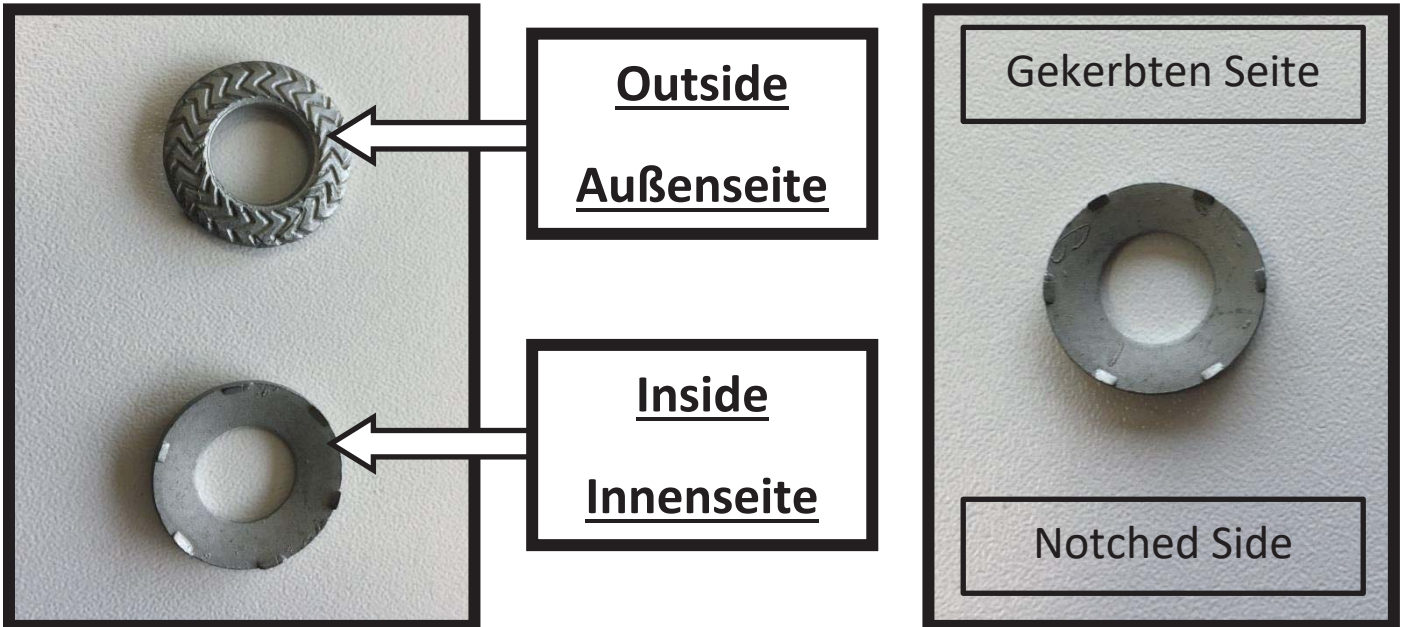




 **Note!!** Required to use supplied washers on both sides the bottom long-hole to keep the shock absorber in place after alignment

 **ACHTUNG** : Es ist zwingend erforderlich die mitgelieferten Unterlegscheiben an beiden Seiten des unteren Langloches des Stoßdämpfers zu verwenden.



 **Note!!** the notched side of the ring should be in contact with to the shock absorber

 **ACHTUNG** : Ring sollte mit der gekerbten Seite an dem Stoßdämpfer anliegen